

**RATINGS & CAPACITIES**



Input : 1,500 MBH  
 Gross Output : 1,251 MBH  
 Net AHRI Rating : 1,088 MBH

37.4 B.H.P. (366.6 kW)  
 Fuel : Natural Gas or Propane  
 Inlet Gas Pressure (NG) : 5 PSI Max.  
 Inlet Gas Pressure (LP) : 2 PSI Max.  
 (NG/LP) : 7" W.C. Min.  
 Operating Weight : 1,472 Lbs. (667.7 kg)

**ELECTRICAL SUPPLY OPTIONS**

120v/1ph/60hz:	7.5 Amps
208v/1ph/60hz:	6.6 Amps
230v/1ph/60hz:	6.4 Amps
208v/3ph/60hz:	6.0 Amps
230v/3ph/60hz:	6.0 Amps
460v/3ph/60hz:	3.0 Amps

**ASME DESIGN DATA**

Max. 160 PSIG & 250°F

**TRIM & CONTROLS**

High Temperature Limit	TSBC (EVS ONLY)
Flame Safeguard	RWF55 (EVA ONLY)
High/Low Gas Press Switches	Pilot Gas Valve
Modulating Gas Valve	Pilot Gas Regulator
Operating Control	Pilot/Leak Test Cocks
Blower Motor, 1-1/2 HP	Combustion Air Switch
Water Flow Switch	Press. & Temp. Gauge
LWCO	Relief Valve
	VFD

**DOUBLE BLOCK & BLEED(D.B.&B.) GAS TRAIN OPTION**

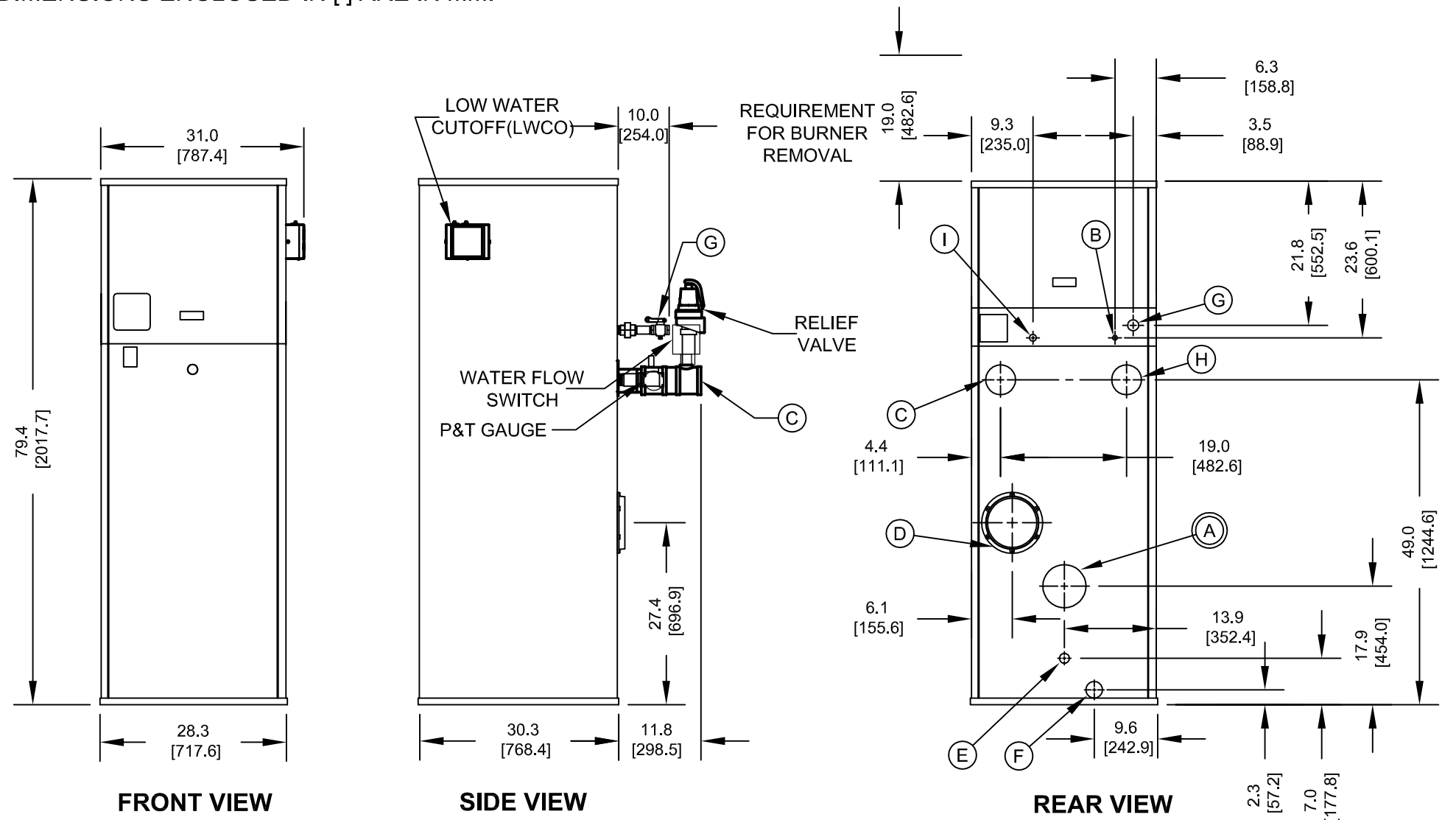
The following components are included in addition to above items when this option is used.  
 (1) Motorized Gas Valve, (1) Solenoid Gas Valve  
 N.O. Vent Valve

**D.B.&B. W/ P.O.C. GAS TRAIN OPTION**

The following components are included in addition to above items when this option is used.  
 (2) Motorized Gas Valves With Proof Of Closure switches  
 Flame Safeguard that recognizes proof of closure valves.  
 N.O. Vent Valve

**NOTES:**

1. SEE O&M FOR REQUIRED INSTALLATION CLEARANCES.
2. DIMENSIONS SHOWN ARE FOR REFERENCE ONLY.
3. DIMENSIONS ENCLOSED IN [ ] ARE IN MM.



CONNECTION	DESCRIPTION
(A)	FLUE OUTLET, 6" [152.4] DIAMETER (AL29-4C SS)
(B)	GAS PILOT, 1/4" [6.4] O.D. TUBE
(C)	WATER SUPPLY TO SYSTEM, 3" NPT
(D)	INLET AIR, 8" [203.2] DIAMETER
(E)	DRAIN, CONDENSATE, 5/8" [15.9] O.D. TUBE
(F)	DRAIN, BOILER, 1" NPT
(G)	GAS SUPPLY, 1 1/2" NPT
(H)	WATER RETURN FROM SYSTEM, 3" NPT
(I)	GAS VENT, 3/4" NPT (D.B.&B. & D.B.&B. w/POC ONLY)

**EVA/EVS-1500 BOILER**



Property of  
 P.O. Box 10517, Lancaster, PA 17605-0517

Innovative Equipment For Hot Water Systems  
 www.thermalsolutions.com